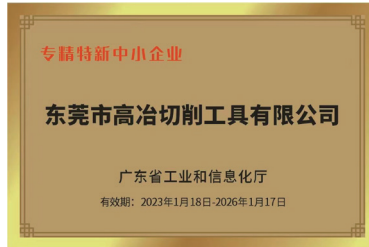
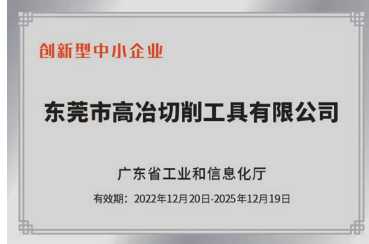


K290A

HIGH-EFFICIENCY LARGE CUTTING DEPTH

ALUMINUM ALLOY
PROCESSING TOOL SERIES





KOYINCUT (since 2007) is a manufacturer independently develops and produces high-performance CNC cutting tools. All products are precision ground to achieve better performance and high precision. Through years of close cooperation with customers and partners, KOYINCUT has accumulated a large amount of applied technology, independent innovation technology, and multiple invention patents.

KOYINCUT has made significant achievements in improving the quality and efficiency of customized tool development for customers, and has received high recognition from the market. The company's technical team has rich experience and a large number of successful cases for customers who need tool solutions or processing efficiency improvement.

KOYINCUT aims at optimizing customers' competitive advantages.

K290A SERIES

K290A-15 SERIES FEATURES AND ADVANTAGES

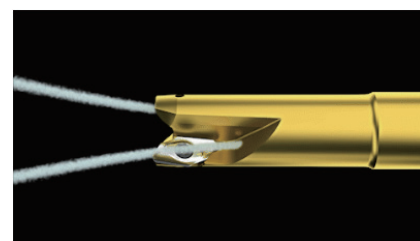
Diamond-like carbon coating



Big rake angle



Wide spiral angle

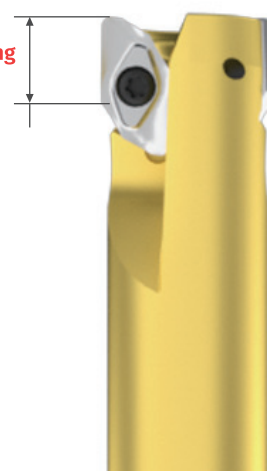


Inner cooling system

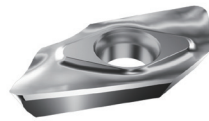
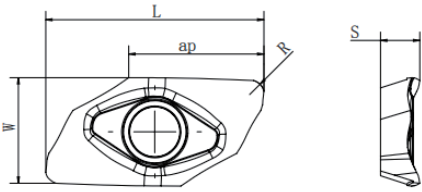
FEATURES AND ADVANTAGES

- Easier and faster machining, bigger cutting depth
- Outstanding chip control and cooling effect through inner cooling system
- Excellent chip removal capability
- Significantly improve tool life
- Suitable for different aluminum alloys

Maximum cutting depth 15MM



K290A-15 Insert



K290A-15 (Mirror polished)
K290A AXGT 1505..R KCN10

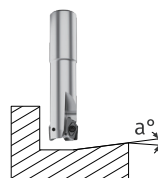
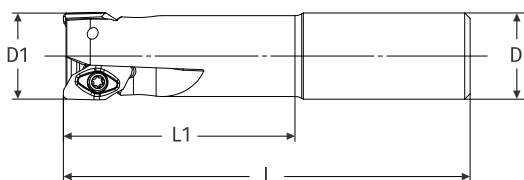


K290A-15 (Diamond-like carbon coating)
K290A AXGT 1505..R KCN10D

Type	Grade		Size (mm)				
	KCN10	KCN10D	W	ap	L	R	S
K290A AXGT 150502R	○		12.9	15	23.95	0.2	4.9
K290A AXGT 150504R	●		12.9	15	24.39	0.4	4.9
K290A AXGT 150508R	●		12.97	15.8	24.4	0.8	4.73
K290A AXGT 150512R	●		12.55	15.8	23.5	1.2	4.72
K290A AXGT 150516R	●		12.55	15.7	23.3	1.6	4.70
K290A AXGT 150520R	●		12.55	15.2	22.3	2.0	4.64
K290A AXGT 150525R	●		12.55	15.1	22.1	2.5	4.60
K290A AXGT 150530R	●		12.55	15.0	21.9	3.0	4.50
K290A AXGT 150532R	●		12.55	15.0	21.9	3.2	4.51
K290A AXGT 150540R			12.55	14.5	20.9	4.0	4.41
K290A AXGT 150502R		○	12.9	15	23.95	0.2	4.9
K290A AXGT 150504R		●	12.9	15	24.39	0.4	4.9
K290A AXGT 150508R		●	12.97	15.8	24.4	0.8	4.73
K290A AXGT 150512R		●	12.55	15.8	23.5	1.2	4.72
K290A AXGT 150516R		●	12.55	15.7	23.3	1.6	4.70
K290A AXGT 150520R		●	12.55	15.2	22.3	2.0	4.64
K290A AXGT 150525R		●	12.55	15.1	22.1	2.5	4.60
K290A AXGT 150530R		●	12.55	15.0	21.9	3.0	4.50
K290A AXGT 150532R		●	12.55	15.0	21.9	3.2	4.51
K290A AXGT 150540R		○	12.55	14.5	20.9	4.0	4.41

●: Standard stock ○: Customized products

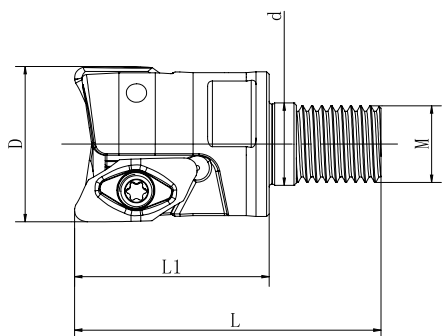
K290A-15 Tool holder



Type		Size (mm)						Accessories	
		D1	D	L	L1	Z	a° max	Screw	Wrench
K290A EAL-D32-C32-160L-15	●	32	32	160	80	2	22.0	KSM500110	KWT-20
K290A EAL-D32-C32-200L-15	○	32	32	200	90	2	22.0		
K290A EAL-D40-C32-160L-15	○	40	32	160	50	2	16.0		

●: Standard stock ○: Customized products

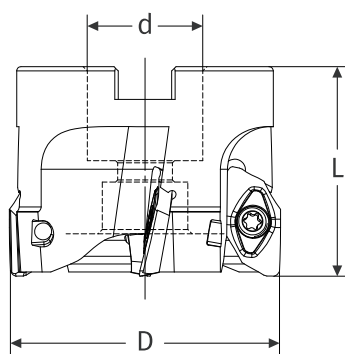
K290A-15 Threading head



Type		Size (mm)						Accessories	
		D	M	d	L	L1	Z	Screw	Wrench
K290A-2032-M16-15	●	32	M16	17	63	42	2	KSM500110	KWT-20

●:Standard stock ○:Customized products Z:Numbers of edge

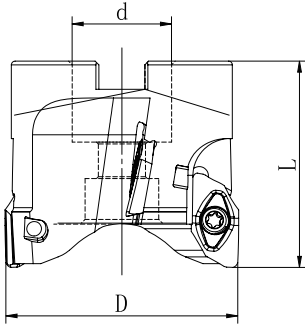
K290A-15 Cutter head



Type		Size (mm)					Accessories	
		D	L	d	Z	a° max	Screw	Wrench
K290A FAL-D50-22-3T-15	●	50	45	22	3	10.0	KSM500110	KWT-20
K290A FAL-D63-22-4T-15	●	63	50	22	4	7.0		
K290A FAL-D63-27-4T-15	●	63	50	27	4	7.0		
K290A FAL-D80-27-5T-15	●	80	50	27	5	6.0		
K290A FAL-D100-32-6T-15	●	100	50	32	6	4.0		
K290A FAL-D125-40-7T-15	○	125	63	40	7	3.0		

●:Standard stock ○:Customized products

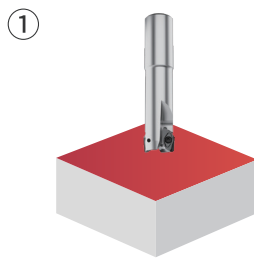
SM-29 Ultra deep cutter head



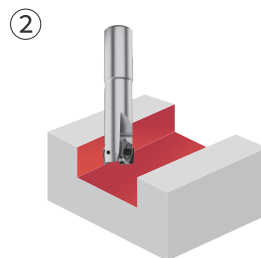
Type		Size (mm)						Accessories	
		D	L	ap	d	Z	a° max	Screw	Wrench
K290A SM D50-29-22-4T-15	○	50	55	29	22	4	11.0	KSM500110	KWT-20
K290A SM D63-29-22-4T-15	○	63	55	29	22	4	10.0		

●: Standard stock ○: Customized products

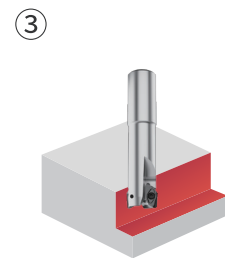
Application scenarios



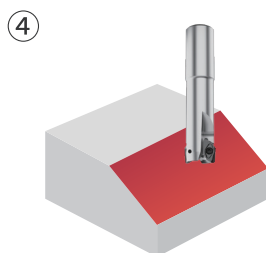
End-milling



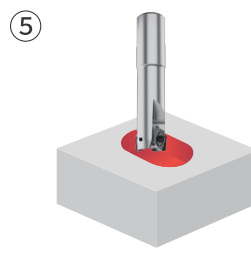
Plunge milling



Shoulder milling



Slope milling



Cavity milling

Recommend Application Parameter

ISO	Machined material	Hardness HB	Grade	Cutting speed Vc(m/min)	Feed per teeth fz(mm/t)
N	Aluminum alloy	60	KCN10	300-3000	0.15-0.35
			KCN10D	420-5000	0.15-0.45
		100	KCN10	200-2000	0.1-0.25
			KCN10D	280-2800	0.1-0.35
	Cast aluminum alloy Si≤12%	75	KCN10	200-2000	0.15-0.3
			KCN10D	280-2800	0.15-0.45
		90	KCN10	200-1500	0.1-0.25
			KCN10D	280-2100	0.1-0.35
	cast aluminum alloy Si>12%	130	KCN10	200-1000	0.07-0.15
			KCN10D	280-1400	0.07-0.25
	Copper alloy Pb>1%	110	KCN10	200-800	0.07-0.15
			KCN10D	280-1100	0.07-0.25
	Copper alloy	90	KCN10	300-1000	0.1-0.15
			KCN10D	420-1400	0.1-0.35
		100	KCN10	300-800	0.1-0.15
			KCN10D	420-1100	0.1-0.3
	Rigid plastics, Fber reinforcedplastics	—	KCN10	100-500	0.1-0.15
			KCN10D	140-700	0.1-0.3
	Ebonite	—	KCN10	100-300	0.1-0.15
			KCN10D	140-420	0.1-0.3

K290A SERIES

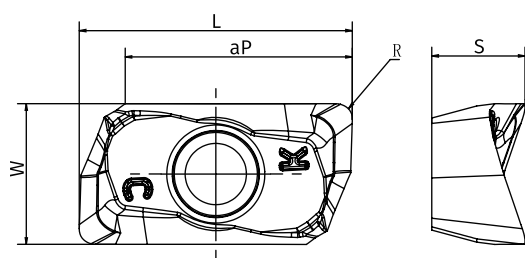
K290A-10 SERIES FEATURES AND ADVANTAGES

FEATURES AND ADVANTAGES

- Combines big rake angle and wide spiral angle to lower the cutting resistance, making the machining process easier and faster
- Has the chip space mirror polished to achieve better chip control, mitigating the built-up edge
- Suitable for different aluminum alloys



K290A-10 Insert



K290A-10 (Mirror polished)
 K290A AXGT 1043..R KCN10

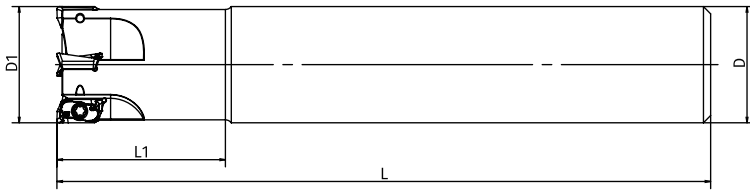


K290A-10 (Diamond-like carbon coating)
 K290A AXGT 1043..R KCN10D

Type	Size (mm)						
	KCN10	KCN10D	W	ap	L	R	S
K290A AXGT 104304R	●		6.4	10	12.5	0.4	4.3
K290A AXGT 104308R	●		6.4	10	12.48	0.8	4.26
K290A AXGT 104316R	●		6.4	10	12.44	1.6	4.15
K290A AXGT 104304R		●	6.4	10	12.5	0.4	4.3
K290A AXGT 104308R		●	6.4	10	12.48	0.8	4.26
K290A AXGT 104316R		●	6.4	10	12.44	1.6	4.15

●: Standard stock ○: Customized products

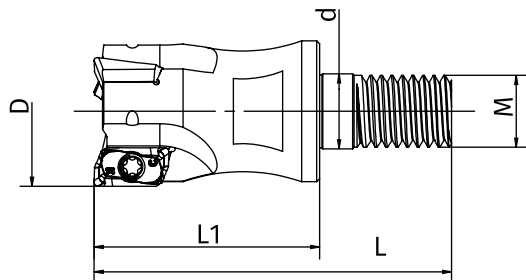
K290A-10 Tool holder



Type		Size (mm)					Accessories	
		D1	D	L	L1	Z	Screw	Wrench
K290A 2016-C16-L120-10	●	16	16	120	25	2	KSM250060	KWT-8
K290A 2017-C16-L120-10	●	17	16	120	25	2		
K290A 3020-C20-L165-10	●	20	20	165	30	3		
K290A 3021-C20-L165-10	●	21	20	165	30	3		
K290A 4025-C25-L180-10	●	25	25	180	35	4		
K290A 4026-C25-L180-10	●	26	25	180	38	4		
K290A 5032-C32-L180-10	●	32	32	180	48	5		

●: Standard stock ○: Customized products Z: Numbers of edge

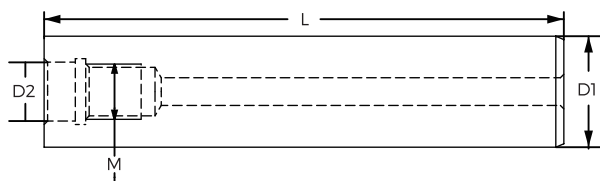
K290A-10 Threading head



Type		Size (mm)						Accessories	
		D	M	d	L	L1	Z	Screw	Wrench
K290A 2016-M8-10	●	16	M8	8.5	46	23	2	KSM250060	KWT-8
K290A 2017-M8-10	●	17							
K290A 3020-M10-10	●	20	M10	10.5	49	30	3		
K290A 3021-M10-10	●	21							
K290A 3025-M12-10	●	25	M12	12.5	57	35	3		
K290A 4025-M12-10	●	25							
K290A 4026-M12-10	●	26	M12	12.5	57	35	4		
K290A 5032-M16-10	●	32						M16	17

●: Standard stock ○: Customized products Z: Numbers of edge

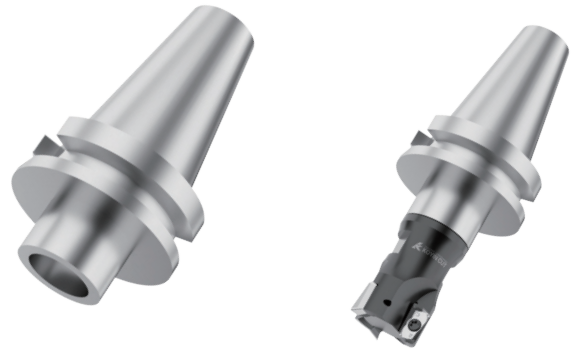
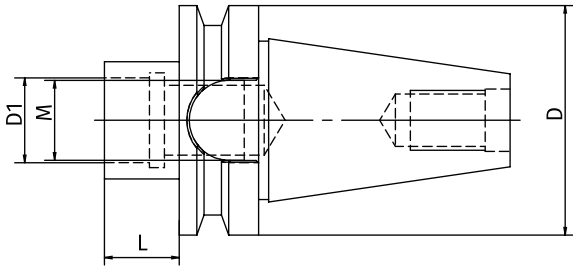
Anti-seismic bar



Type		Size (mm)			
		L	D1	M	D2
KHC16-100-M8	●	100	16	M8	8.5
KHC16-150-M8	●	150			
KHC16-200-M8	●	200			
KHC16-250-M8	●	250			
KHC16-300-M8	●	300			
KHC20-100-M10	●	100	20	M10	10.5
KHC20-150-M10	●	150			
KHC20-200-M10	●	200			
KHC20-250-M10	●	250			
KHC20-300-M10	●	300			
KHC25-100-M12	●	100	25	M12	12.5
KHC25-150-M12	●	150			
KHC25-200-M12	●	200			
KHC25-250-M12	●	250			
KHC25-300-M12	●	300			
KHC25-350-M12	●	350	32	M16	17
KHC32-150-M16	●	150			
KHC32-200-M16	●	200			
KHC32-250-M16	●	250			
KHC32-300-M16	●	300			
KHC32-350-M16	●	350	400		
KHC32-400-M16	●	400			

●: Standard stock ○: Customized products

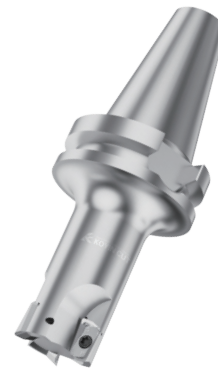
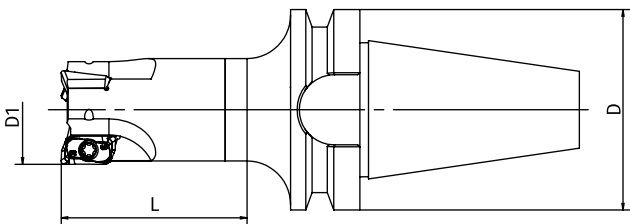
BT30/BBT30 Split-type shank



Type		Size (mm)			
		D1	M	D	L
BT30-M8-L15	●	8.5	8	46	15
BT30-M10-L15	●	10.5	10	46	15
BT30-M12-L15	●	12.5	12	46	15
BT30-M16-L15	●	17	16	46	15
BBT30-M8-L15	○	8.5	8	46	15
BBT30-M10-L15	○	10.5	10	46	15
BBT30-M12-L15	○	12.5	12	46	15
BBT30-M16-L15	○	17	16	46	15

●: Standard stock ○: Customized products Z: Numbers of edge

BT30/BBT30 Solid shank

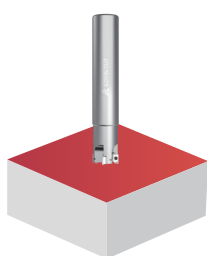


Type		Size (mm)					
		D1	D	L	Z	Screw	Wrench
K290A BT30-2016-C46-L28-10	●	16	46	28	2	KSM250060	KWT-8
K290A BT30-3020-C46-L28-10	●	20	46	28	3		
K290A BT30-4025-C46-L33-10	●	25	46	33	4		
K290A BT30-5032-C46-L40-10	●	32	46	40	5		
K290A BBT30-2016-C46-L28-10	○	16	46	28	2		
K290A BBT30-3020-C46-L28-10	○	20	46	28	3		
K290A BBT30-4025-C46-L33-10	○	25	46	33	4		
K290A BBT30-5032-C46-L40-10	○	32	46	40	5		

●: Standard stock ○: Customized products Z: Numbers of edge

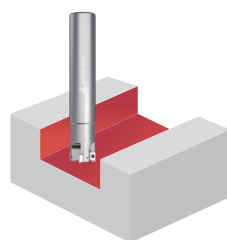
Application scenarios

①



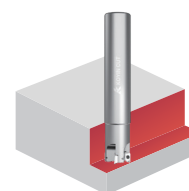
End-milling

②



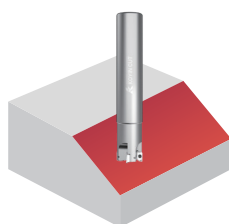
Plunge milling

③



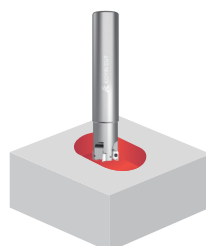
Shoulder milling

④



Slope milling

⑤



Cavity milling

Recommend application parameter

Insert grade	Linear velocity V_c (m/min)	Feed per teeth F_z (mm/t)	Cutting depth A_p (mm)
KCN10	300-1500	0.1-0.3	2-10
KCN10D	400-3000	0.2-0.4	2-10



Address: First Floor, Building A, No. 26, Hedong 3rd Road, Jin xia Community.
Chang'an Town, Dongguan City, Guangdong Province

Phone: 0769-8507 6660/8507 8880

Website: www.koyincut.com

Mailbox: coyincut@163.com



WeChat official account



Microvision



BILIBILI



Tiktok