

KM Economical Quick Change Modular Turning Tools

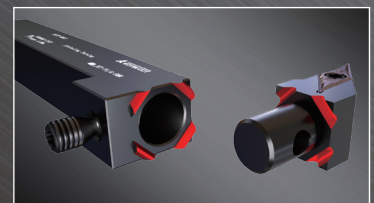
# KM Economical quick change modular turning tools

## FEATURES AND ADVANTAGES

- By splitting the head and holder, one holder for multiple cutting heads according to need becomes possible
- Standardized and located once assembled, making the operation quick and easy

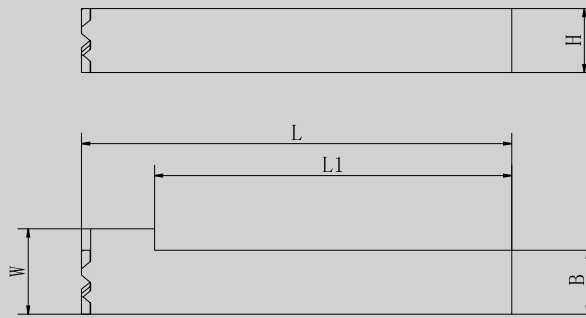
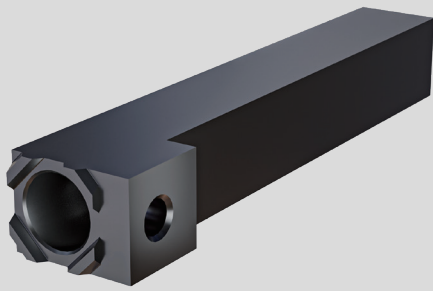


Splitted Structure Design



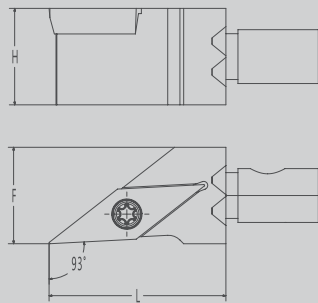
Processing Application

## Turning-Modular tool holders

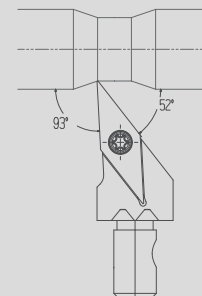


Type	Size					Accessories	
	H	B	W	L	L1	Screw	Wrenth
KM10-1012F	10	12	16	80	67	KS-4006 -HS-P0.5	KW-LH2
KM12-1212F	12	12	16	80	67	KS-5007 -TS-IP	KW-IP10
KM12-1212H	12	12	16	100	87		
KM16-1616F	16	16	18	80	67	KS-6009 -HS-P0.75	KW-LH3
KM16-1616H	16	16	18	100	87		

## V-shape Cutting Heads

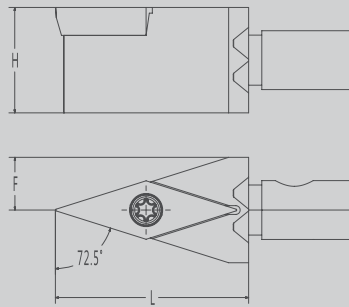
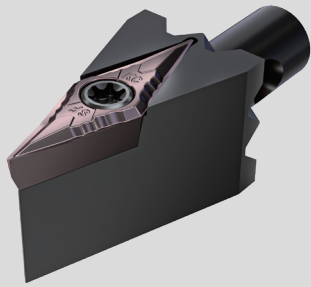


Processing Application

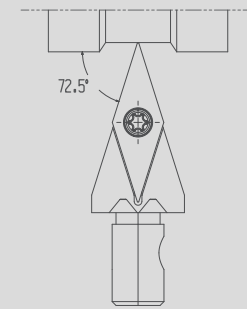


Type	Size			Accessories		Corresponding Insert
	L	H	F	Screw	Wrenth	
KM10-SVJB <sup>®</sup> /L-11	22	10	12	KS-2503-T	KW-T8	VB□□1103□□
KM12-SVJB <sup>®</sup> /L-11		12	12			
KM16-SVJB <sup>®</sup> /L-11		23	16			
KM10-SVJC <sup>®</sup> /L-11	22	10	12	KS-2503-T	KW-T8	VC□□1103□□
KM12-SVJC <sup>®</sup> /L-11		12	12			
KM16-SVJC <sup>®</sup> /L-11		23	16			
KM10-SVJP <sup>®</sup> /L-11	22	10	12	KS-2503-T	KW-T8	VP□□1103□□
KM12-SVJP <sup>®</sup> /L-11		12	12			
KM16-SVJP <sup>®</sup> /L-11		23	16			

## Turning-Modular tool holders

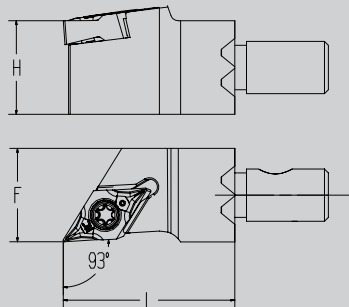
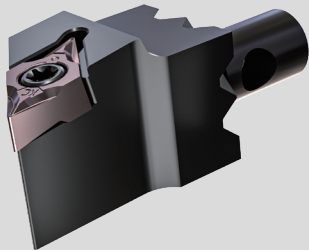


Processing Application

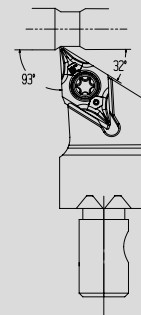


Type	Size			Accessories		Corresponding Insert
	L	H	F	Screw	Wrenth	
KM10-SVVBN-11	22	10	6	KS-2503-T	KW-T8	VB□□1103□□
KM12-SVVBN-11		12	6			
KM16-SVVBN-11		16	8			
KM10-SVVCN-11	22	10	6	KS-2503-T	KW-T8	VC□□1103□□
KM12-SVVCN-11		12	6			
KM16-SVVCN-11		16	8			

## KDC Cutting Heads

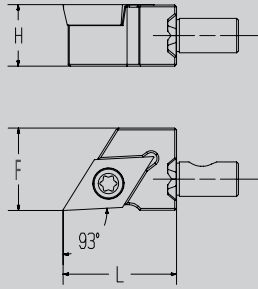
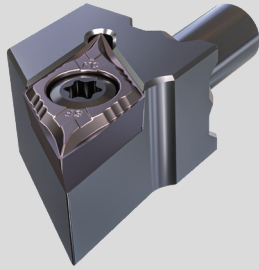


Processing Application

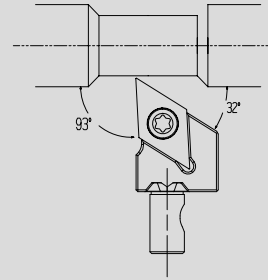


Type	Size			Accessories		Corresponding Insert
	L	H	F	Screw	Wrenth	
KM10-SDJXR-07	22	10	12	KS-2504-T	KW-T8	DXGU 0703□□R□□
KM12-SDJXR-07		12	12			
KM16-SDJXR-07		16	16			
KM10-SDJXR-11	22	10	16	KS-4008-T	KW-T15	DXGU 1104□□R□□
KM12-SDJXR-11		12	16			
KM16-SDJXR-11		16	16			

## D-shape Cutting Heads

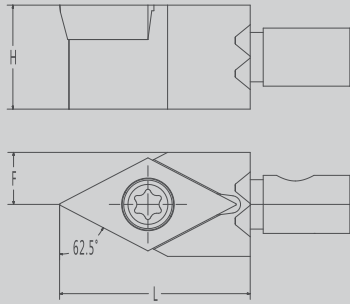
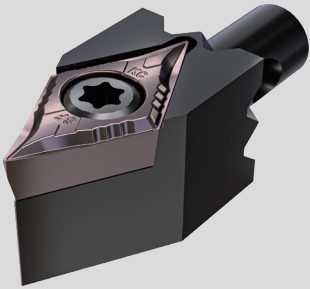


Processing Application

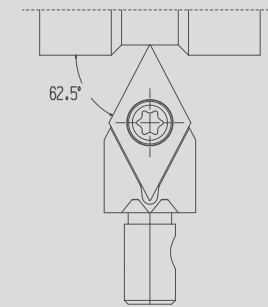


Type	Size			Accessories		Corresponding Insert
	L	H	F	Screw	Wrenth	
KM10-SDJC $\frac{1}{2}$ -11	22	10	16	KS-4008-T	KW-T15	DC□□11T3□□
KM12-SDJC $\frac{1}{2}$ -11		12	16			
KM16-SDJC $\frac{1}{2}$ -11	23	16	16			

## D-shape Cutting Heads

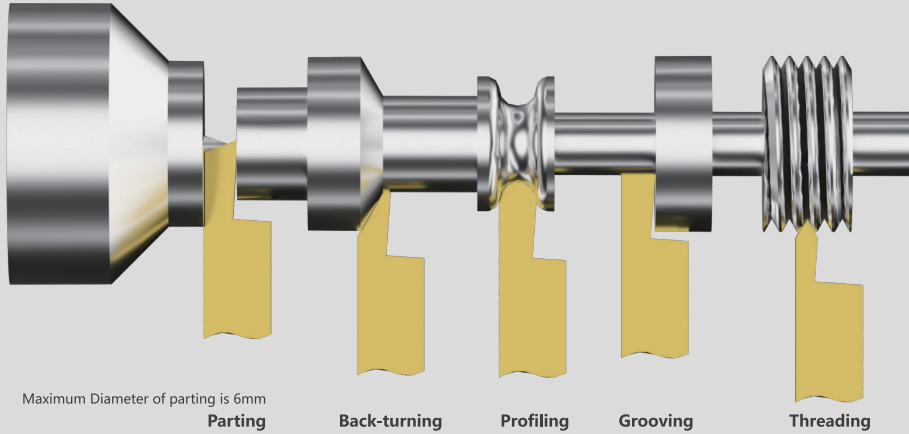


Processing Application

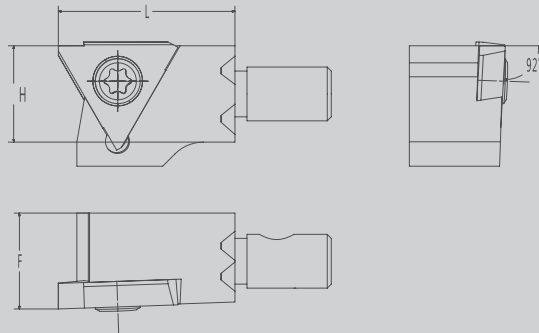
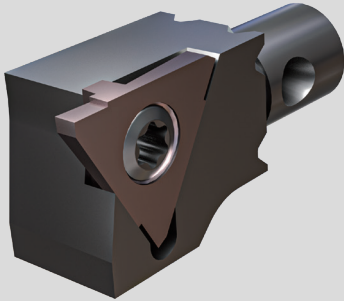


Type	Size			Accessories		Corresponding Insert
	L	H	F	Screw	Wrenth	
KM10-SDNCCN-11	22	10	6	KS-4008-T	KW-T15	DC□□11T3□□
KM12-SDNCCN-11		12	6			
KM16-SDNCCN-11	23	16	8			

## D-shape Cutting Heads

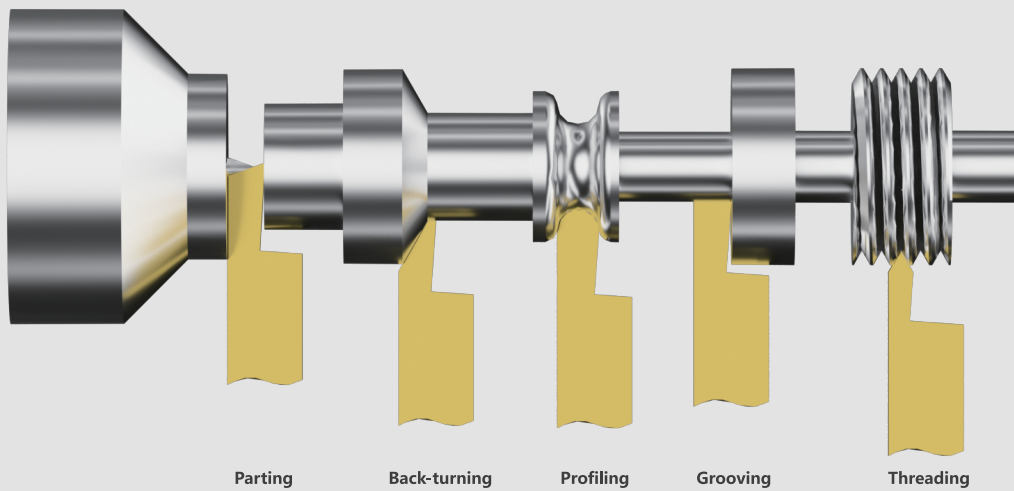


## KST16 Series



Type	Size			Accessories		Corresponding Insert
	L	H	F	Screw	Wrench	
KM10-KST16 <sup>92</sup> /L	22	10	12	KS-4008-T	KW-T15	KST□16% □□
KM12-KST16 <sup>92</sup> /L		12	12			
KM16-KST16 <sup>92</sup> /L	23	16	16			

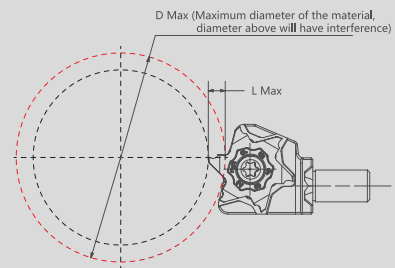
## Processing Application of KX618



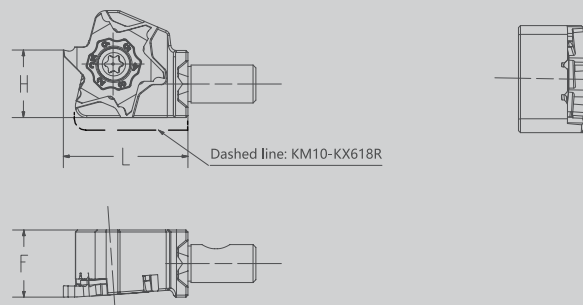
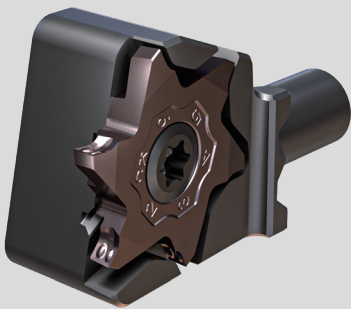
### ● Notice

1. Maximum Diameter of parting is 7mm
2. Maximum Diameter of parting is 3.5MM, Groove depth varies according to the diameter of the material, please refer to the figure below

<b>Dmax</b>	32	42	51	65	100
<b>Lmax</b>	3.5	3.3	3.2	3.0	2.5



## KX618 Cutting Heads



### Type

### Size

### Accessories

### Corresponding Insert

KM10-KX618R  
KM12-KX618R  
KM16-KX618R

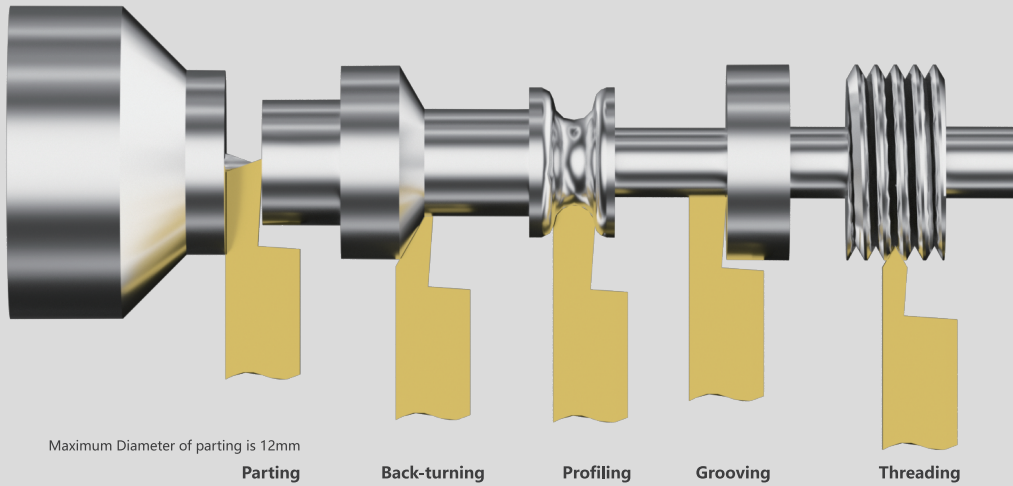
L	H	F
22	10	12
	12	12
23	16	16

Screw  
KS-4008-T

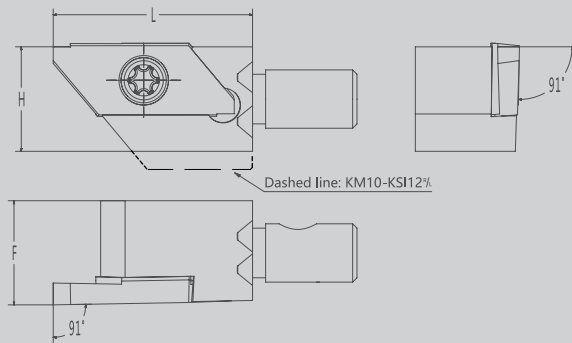
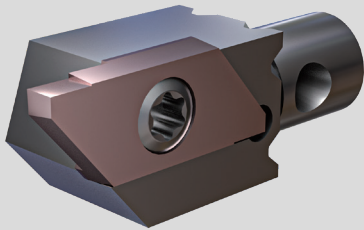
Wrenth  
KW-T15

KX618□R□□

## Processing Application of 12 Series



## KSI12 Cutting Heads



Type	Size			Accessories		Corresponding Insert
	L	H	F	Screw	Wrench	
KM10-KSI12% <sub>L</sub>	25	10	12	KS-35065-T	KW-T15	KSI□12R% □□
KM12-KSI12% <sub>L</sub>		12	12			
KM16-KSI12% <sub>L</sub>	26	16	16			