

QCMT SERIES

Quick Change Modular Turning Tools

Modular Turning Tools
QCMT Quick Change



Symbols of QCMT and KM Tools

	10: 10 Handle								
KM: KM Series	12: 12 Handle				F: 80			JCT=With Inner Cooling	
QCMT: QCMT Series	16: 16 Handle				H: 100			Without Inner Cooling	
Series	Tool Size	-	Tool Height	Tool Width	Tool Length	-	With Inner Cooling		
QCMT	12	-	12	12	F	-	JCT		

Symbols of ISO Standard Cutting Heads

	10: 10 Handle					B: 5°						
KM: KM Series	12: 12 Handle			D: 55° Rhombic	N: 62.5°	C: 7°	R: Right Handed Holders			JCT=With Inner Cooling		
QCMT: QCMT Series	16: 16 Handle			V: 35° Rhombic	V: 72.5°	P: 11°	L: Left Handed Holders			Without Inner Cooling		
				J: 93°	X: Others	N: Versatile Holders						
Series	Head Size	-	screw clamping	Insert Shape	Entering Angle	Clearance Angle	Insert Direction	Edge Length	-	With Inner Cooling	-	Others
QCMT	12	-	S	V	J	C	R	11	-	JCT	-	P

QCMT Quick Change Modular Turning Tools

Symbols of ISO-Y axis Cutting Heads

	10: 10 Handle						B: 5°							
KM: KM Series	12: 12 Handle			D: 55° Rhombic	N: 62.5°	C: 7°	R: right handed holders			JCT=With Inner Cooling				
QCMT: QCMT Series	16: 16 Handle			V: 35° Rhombic	V: 72.5°	P: 11°	L: left handed holders			Without Inner Cooling				
				J: 93°	X: Others	N: Versatile Holders								
Series	Head Size	-	Y axis	-	Screw Clamping	Insert Shape	Entering Angle	Clearance Angle	Insert Direction	Edge Length	-	With Inner Cooling	-	Others
QCMT	12	-	Y	-	S	V	J	C	R	11	-	JCT	-	P

Symbols of KX618 Cutting Heads

	10: 10 Handle										
KM: KM Series	12: 12 Handle									JCT=With Inner Cooling	
QCMT: QCMT Series	16: 16 Handle					R: Right Handed Holders				Without Inner Cooling	
Series	Head Size	-	Kx618 Insert	Cutting Heads Direction	-	With Inner Cooling	-	Others			
QCMT	12	-	KX618	R	-	JCT	-	P			

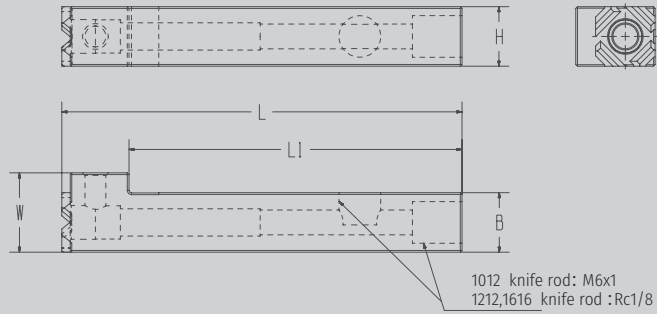
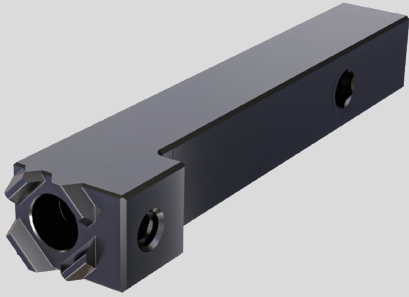
Symbols of KSI12 Cutting Heads

	10: 10 Handle										
KM: KM Series	12: 12 Handle					R: Right Handed Holders				JCT=With Inner Cooling	
QCMT: QCMT Series	16: 16 Handle					L: Left Handed Holders				Without Inner Cooling	
Series	Head Size	-	Ksi12 Insert	Cutting Heads Direction	-	With Inner Cooling	-	Others			
QCMT	12	-	KSI12	R	-	JCT	-	P			

Symbols of KST Cutting Heads

	10: 10 Handle										
KM: KM Series	12: 12 Handle					R: Right Handed Holders				JCT=With Inner Cooling	
QCMT: QCMT Series	16: 16 Handle					L: Left Handed Holders				Without Inner Cooling	
Series	Head Size	-	KST16 Insert	Cutting Heads Direction	-	With Inner Cooling	-	Others			
QCMT	12	-	KST16	R	-	JCT	-	P			

Turning-Inner Cooling Modular Tools



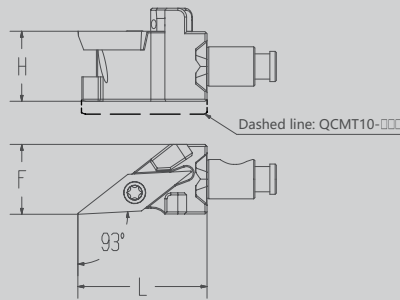
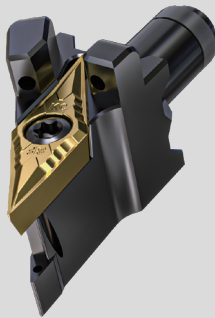
Type

Size

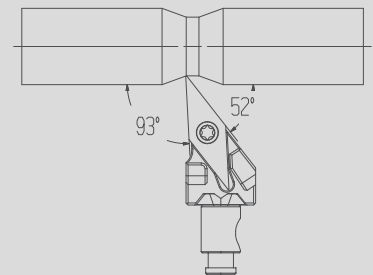
Accessories

Type	H	B	W	L	L1	Screw	Wrenth
QCMT10-1012F-JCT	10	12	16	80	67	KS-4006-HS-P0.5	KW-LH2
QCMT12-1212F-JCT	12	12	16	80	67	KS-5007-TS-IP	KW-IP10
QCMT12-1212H-JCT	12	12	16	100	87		
QCMT16-1616F-JCT	16	16	18	80	67	KS-6009-HS-P0.75	KW-LH3
QCMT16-1616H-JCT	16	16	18	100	87		

V-shape Cutting Heads



Processing Application



Type

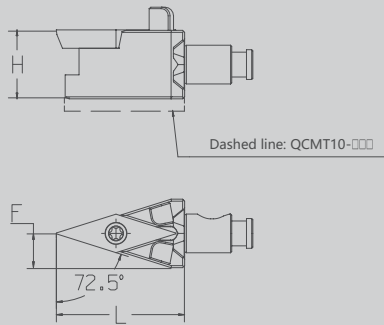
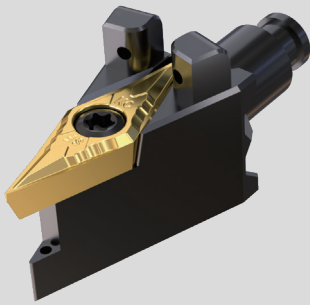
Size

Accessories

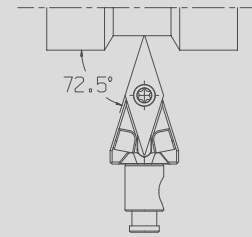
Corresponding Insert

Type	L	H	F	Screw	Wrenth	Corresponding Insert
QCMT10-SVJB $\frac{8}{L}$ 11-JCT-P	22	10	16	KS-2503-T	KW-T8	VB□□1103□□
QCMT12-SVJB $\frac{8}{L}$ 11-JCT-P		12	16			
QCMT16-SVJB $\frac{8}{L}$ 11-JCT-P		23	16			
QCMT10-SVJC $\frac{8}{L}$ 11-JCT-P	22	10	16	KS-2503-T	KW-T8	VC□□1103□□
QCMT12-SVJC $\frac{8}{L}$ 11-JCT-P		12	16			
QCMT16-SVJC $\frac{8}{L}$ 11-JCT-P		23	16			
QCMT10-SVJP $\frac{8}{L}$ -11-JCT-P	22	10	16	KS-2503-T	KW-T8	VP□□1103□□
QCMT12-SVJP $\frac{8}{L}$ -11-JCT-P		12	16			
QCMT16-SVJP $\frac{8}{L}$ -11-JCT-P		23	16			

V-shape Cutting Heads

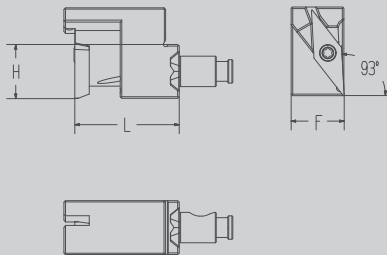
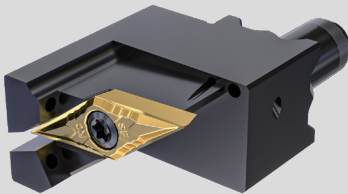


Processing Application

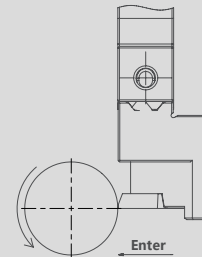


Type	Size			Accessories		Corresponding Insert
	L	H	F	Screw	Wrench	
QCMT10-SVVB11-JCT-P	22	10	5			
QCMT12-SVVB11-JCT-P	22	12	6	KS-2503-T	KW-T8	V6□□1103□□
QCMT16-SVVB11-JCP-P	23	16	8			
QCMT10-SVVC11-JCT-P	22	10	5			
QCMT12-SVVC11-JCT-P	22	12	6	KS-2503-T	KW-T8	VC□□1103□□
QCMT16-SVVC11-JCP-P	23	16	8			

V-shape Y-axis Cutting Heads

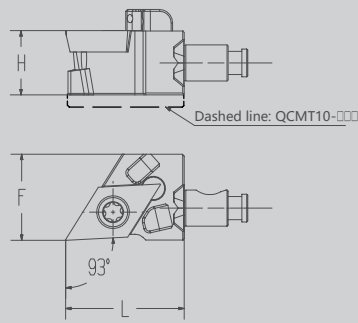
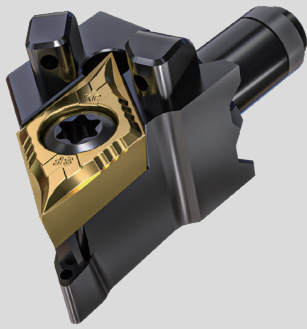


Processing Application

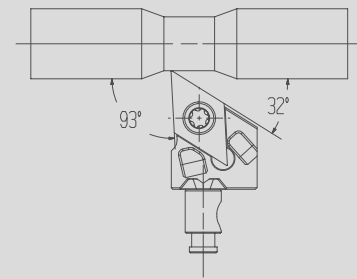


Type	Size			Accessories		Corresponding Insert
	L	H	F	Screw	Wrench	
QCMT10-Y-SVJCR11-JCT-P	23	10	16			
QCMT12-Y-SVJCR11-JCT-P	23	12	16	KS-2503-T	KW-T8	VC□□1103□□
QCMT16-Y-SVJCR11-JCT-P	23	16	16			

D-shape Cutting Heads



Processing Application



Type

Size

Accessories

Corresponding Insert

QCMT10-SDJC%/L11-JCT-P

L H F

Screw Wrenth

DC□□11T3□□

QCMT12-SDJC%/L11-JCT-P

22 10 16

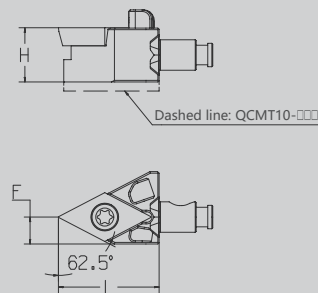
KS-4008-T KW-T15

QCMT16-SDJC%/L11-JCT-P

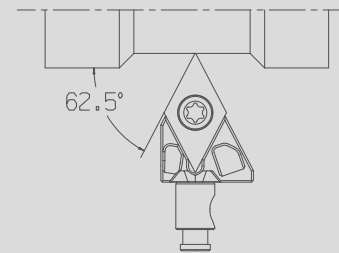
22 12 16

23 16 16

D-shape Cutting Heads



Processing Application



Type

Size

Accessories

Corresponding Insert

QCMT10-SDNCN11-JCT-P

L H F

Screw Wrenth

DC□□11T3□□

QCMT12-SDNCN11-JCT-P

22 10 5

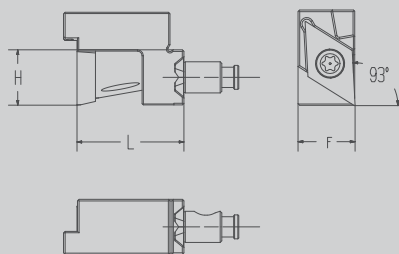
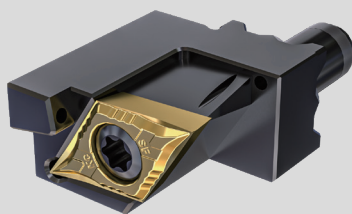
KS-4008-T KW-T15

QCMT16-SDNCN11-JCT-P

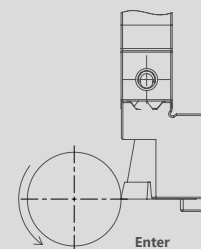
22 12 6

23 16 8

D-shape Y-axis Cutting Heads



Processing Application



Type

Size

Accessories

Corresponding Insert

QCMT10-Y-SDJCR11-JCT-P

L H F

Screw Wrenth

DC□□11T3□□

QCMT12-Y-SDJCR11-JCT-P

23 10 16

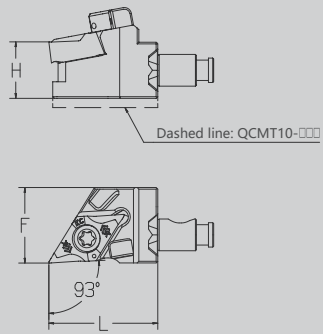
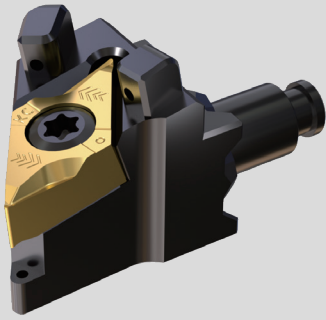
KS-4008-T KW-T15

QCMT16-Y-SDJCR11-JCT-P

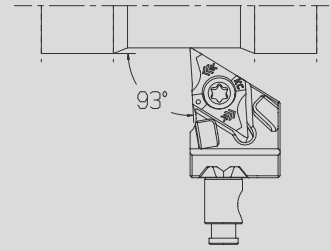
23 12 16

23 16 16

KDC Cutting Heads

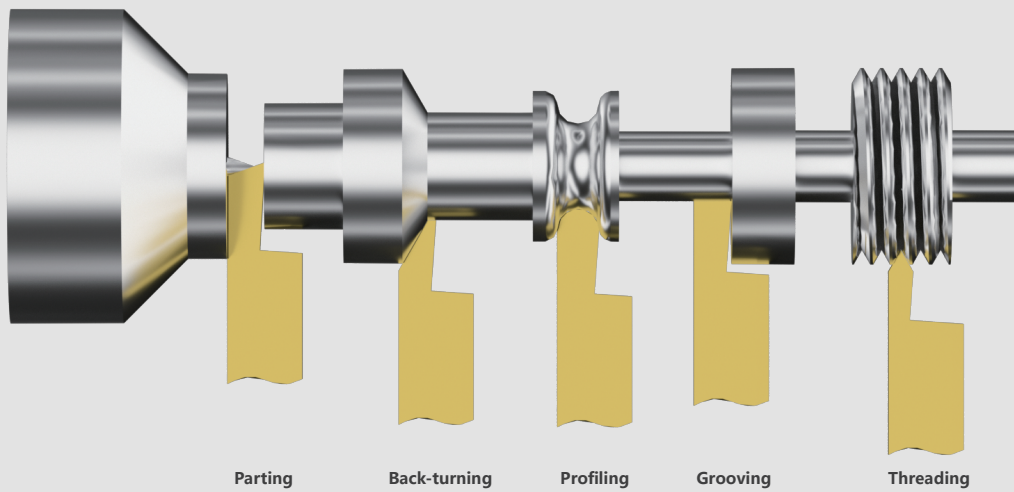


Processing Application



Type	Size			Accessories		Corresponding Insert
	L	H	F	Screw	Wrench	
QCMT10-SDJXR07-JCT-P	22	10	16	KS-2504-T	KW-T8	DXGU 0703□□R□□
QCMT12-SDJXR07-JCT-P	22	12	16			
QCMT16-SDJXR07-JCT-P	23	16	16			
QCMT10-SDJXR11-JCT-P	22	10	16	KS-4008-T	KW-T15	DXGU 1104□□R□□
QCMT12-SDJXR11-JCT-P	22	12	16			
QCMT16-SDJXR11-JCT-P	23	16	16			

KDC Cutting Heads

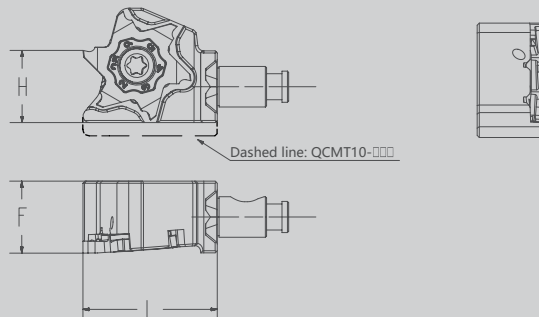
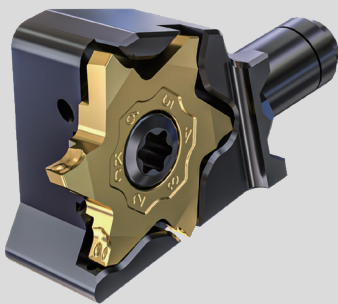


● Notice

1. Maximum Diameter of parting is 7mm
2. Maximum Diameter of parting is 3.5MM, Groove depth varies according to the diameter of the material, please refer to the figure below

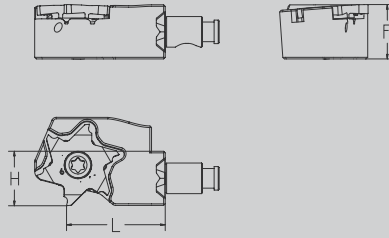
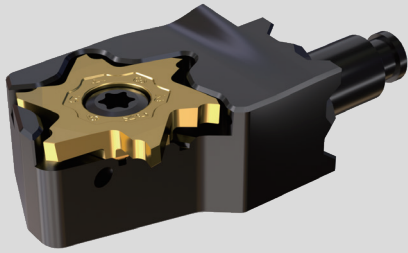
Dmax	32	42	51	65	100	
Lmax	3.5	3.3	3.2	3.0	2.5	

KX618 Cutting Heads

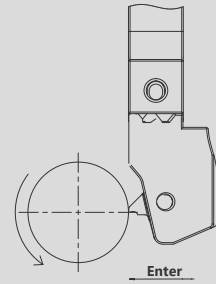


Type	Size			Accessories		Corresponding Insert
	L	H	F	Screw	Wrench	
QCMT10-KX618R -JCT-P	22	10	16	KS-4008-T	KW-T15	KX618□R□□
QCMT12-KX618R -JCT-P		12	16			
QCMT16-KX618R -JCT-P	23	16	16			

KX618-Y axis Cutting heads



Processing Application



Type

QCMT12-Y-KX618R -JCT-P

Size

L	H	F
19.5	12	16

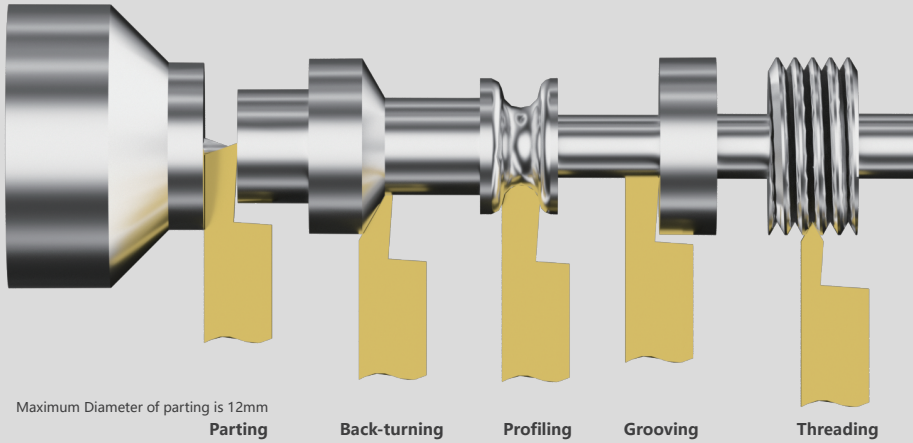
Accessories

Screw	Wrench
KS-4008-T	KW-T15

Corresponding Insert

KX618□R□□

KX618-Y axis Cutting heads



Maximum Diameter of parting is 12mm

Parting

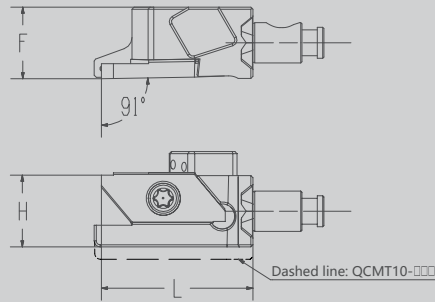
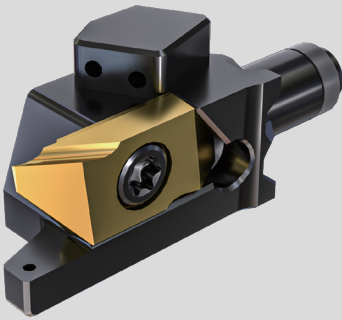
Back-turning

Profiling

Grooving

Threading

KS12 Cutting Heads



Dashed line: QCMT10-□□

Type

Size

Accessories

Corresponding Insert

QCMT10-KS12 $\frac{9}{16}$ -JCT-P

QCMT12-KS12 $\frac{9}{16}$ -JCT-P

QCMT16-KS12 $\frac{9}{16}$ -JCT-P

L

H

F

Screw

Wrenth

25

10

16

KS-35065-T

KW-T15

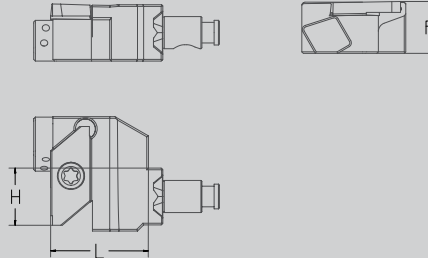
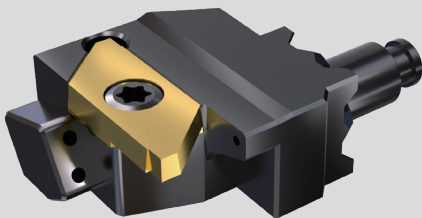
KS□12R $\frac{9}{16}$ □□

26

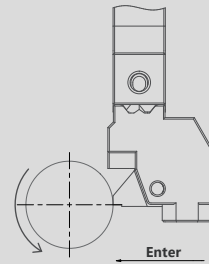
16

16

KS12 Y-axis Cutting Heads



Processing Application



Type

Size

Accessories

Corresponding Insert

QCMT12-Y-KS12 $\frac{9}{16}$ -JCT-P

L

H

F

Screw

Wrenth

20

12

16

KS-35065-T

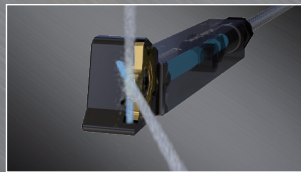
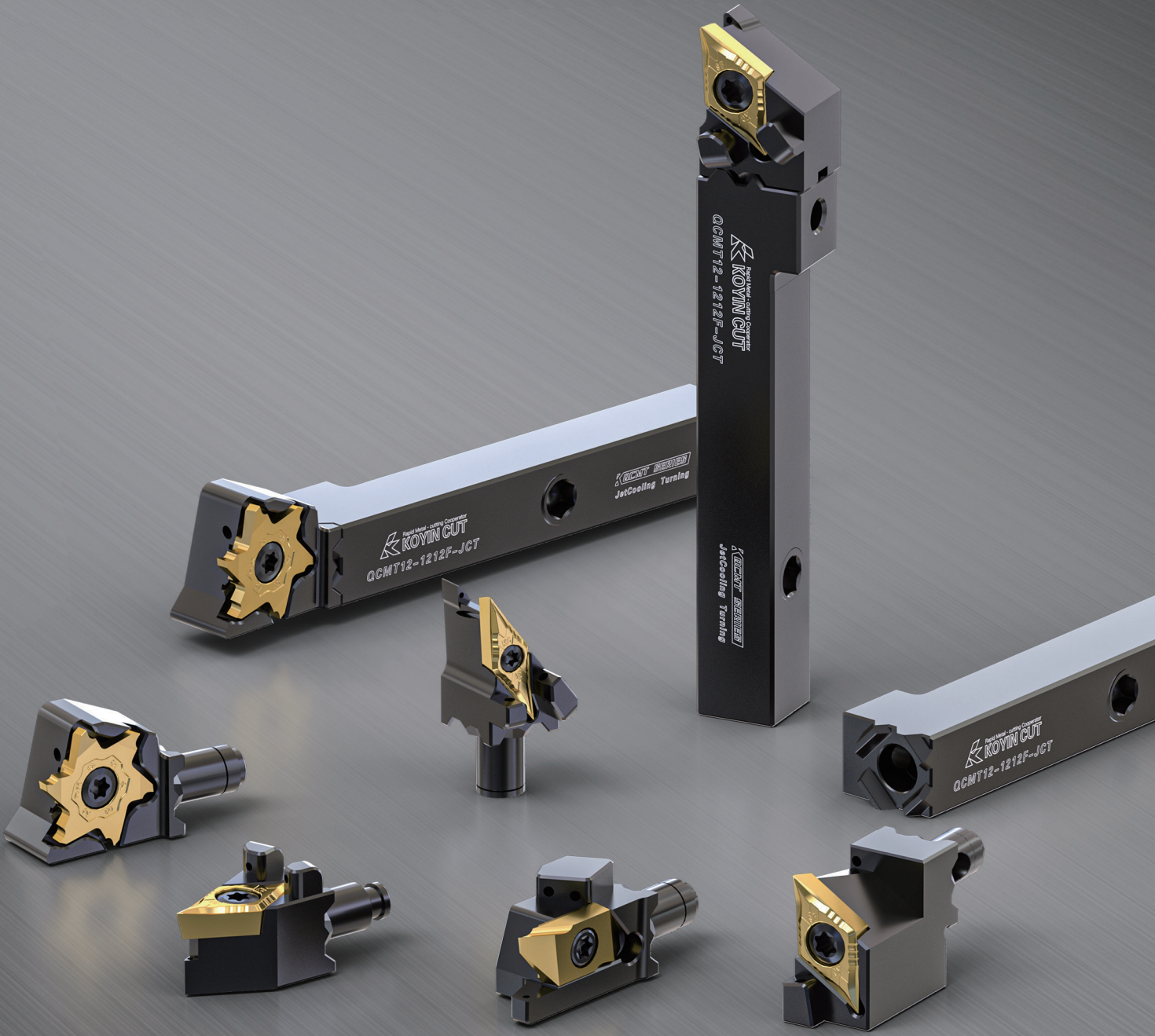
KW-T15

KS□12R $\frac{9}{16}$ □□

QCMT SERIES

Quick Change Modular Turning Tools

Modular Turning Tools
QCMT Quick Change



QCMT SERIES

Quick Change Modular Turning Tools

Modular Turning Tools
QCMT Quick Change

